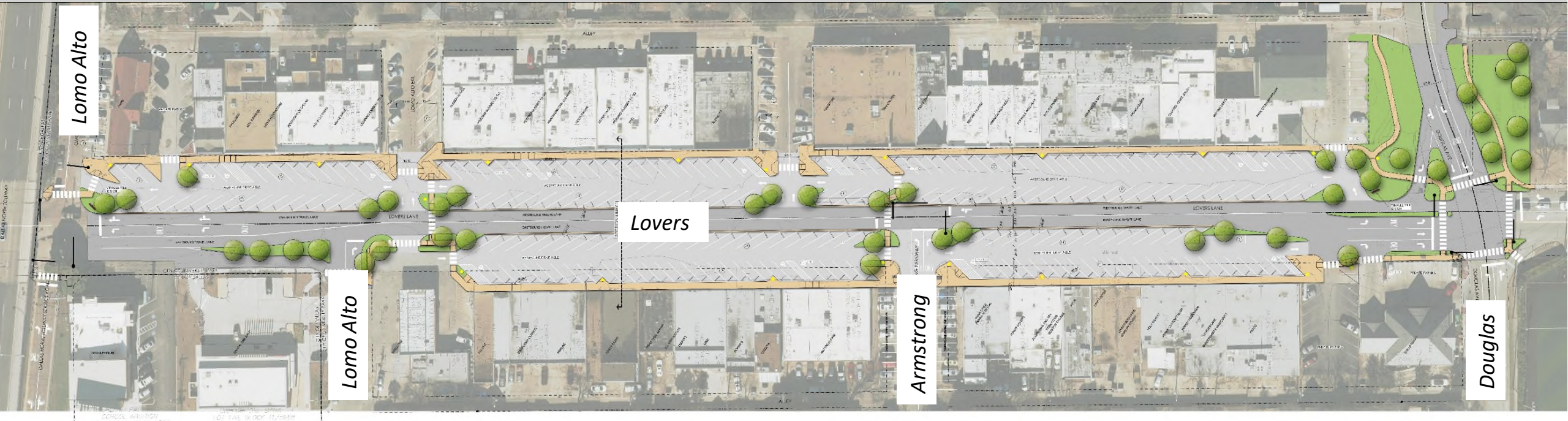




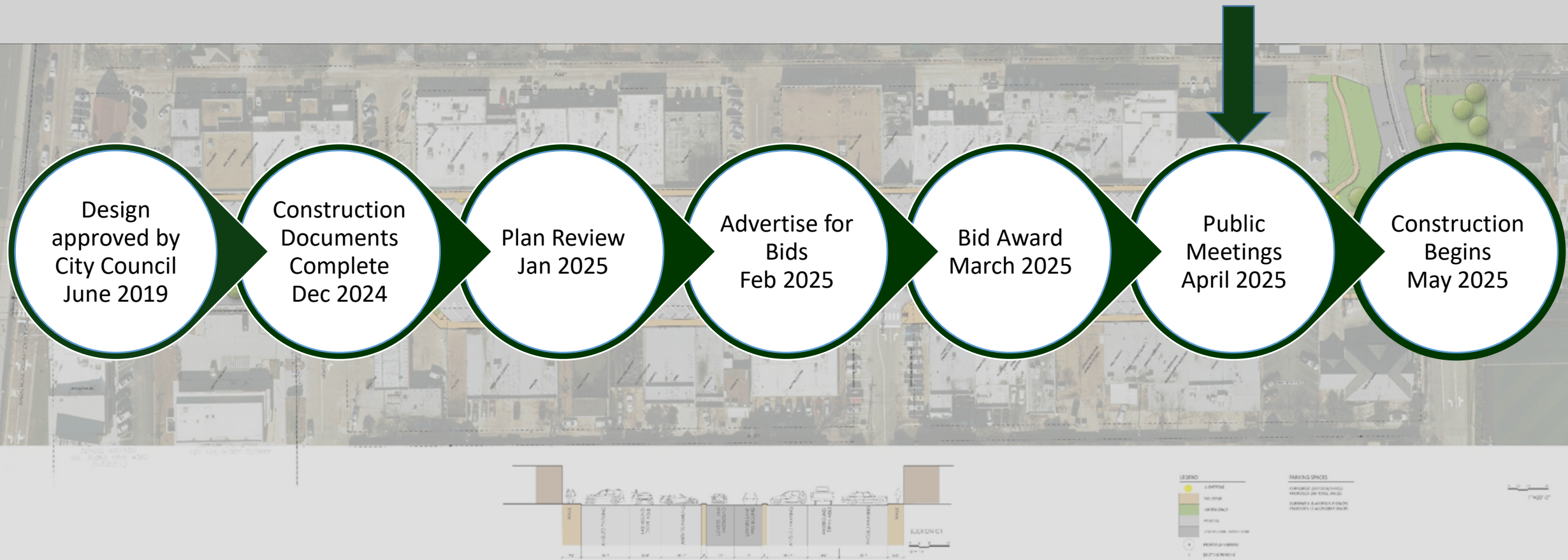
Miracle Mile Reconstruction

Neighborhood Meetings
April 10th and April 24th, 2025

Miracle Mile



Miracle Mile

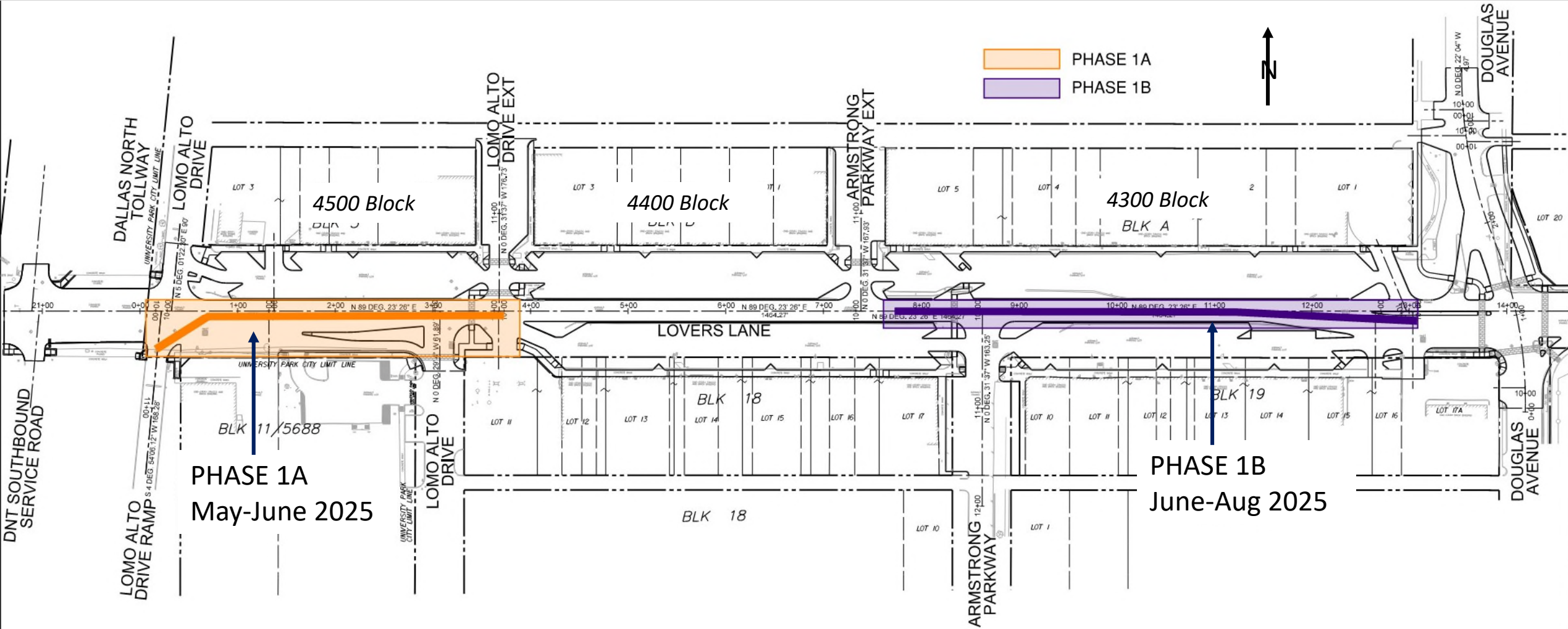


Miracle Mile

- Full paving replacement, including Lovers Lane, parking areas and sidewalks
- Storm drain and water line replacement
- Traffic signal replacement, new lighting, and landscape areas
- SYB Construction Co. selected to build project;
- Mobilization throughout April;
- Construction will begin 5/1, continue in phases through Summer of 2026.



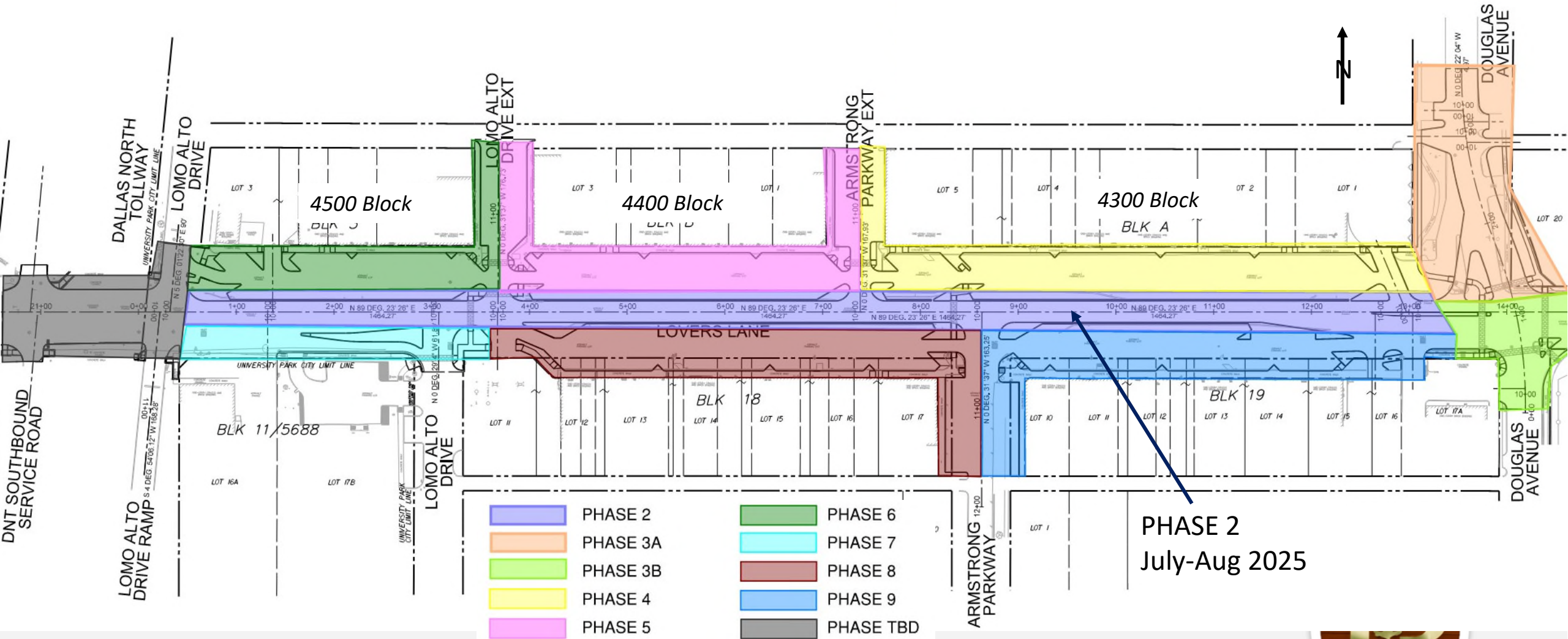
Miracle Mile Construction Phasing



Construction Sequence—Storm Drain and Water Line

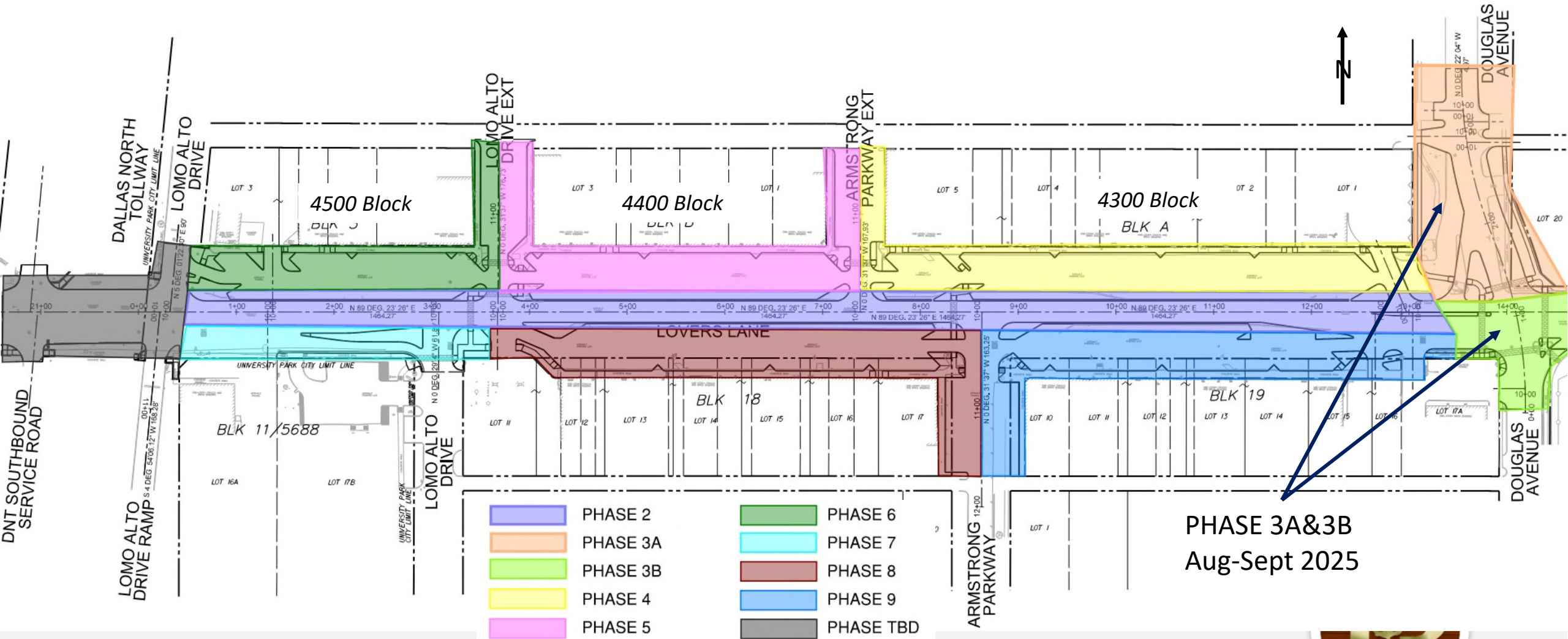


Miracle Mile Construction Phasing



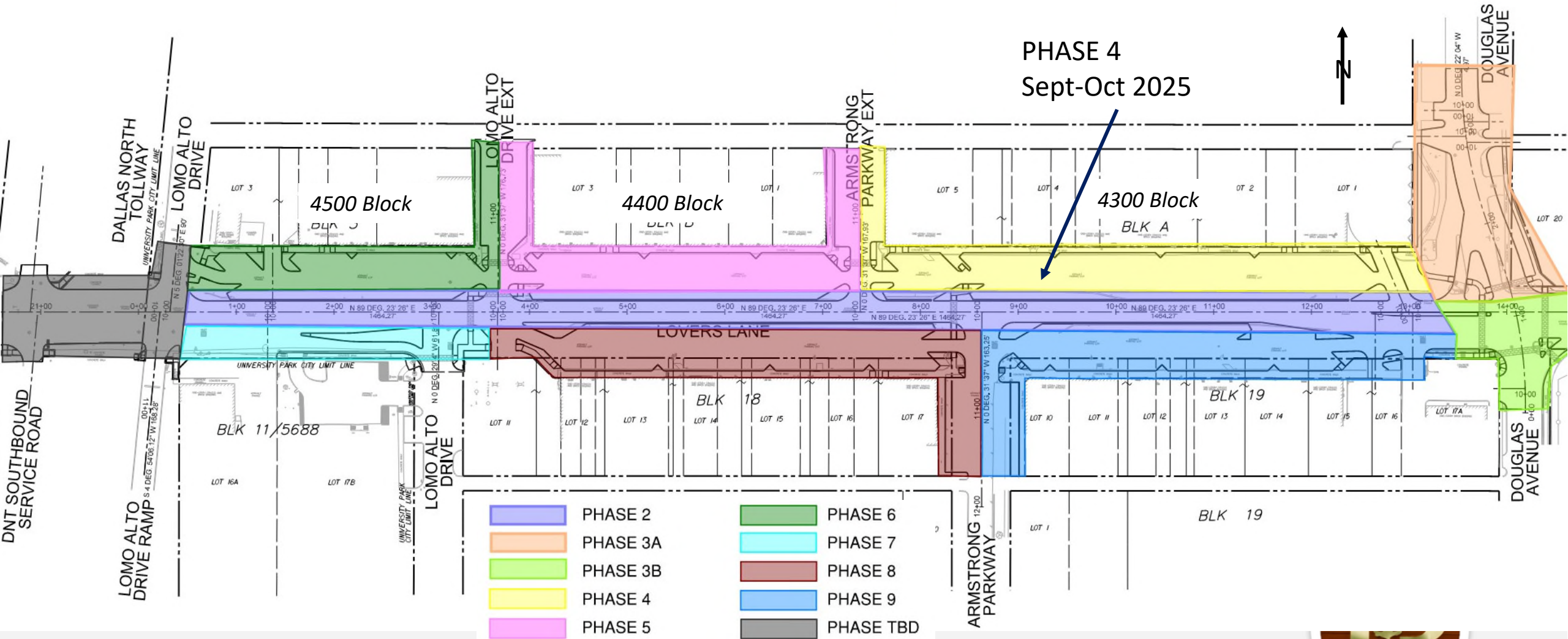
Construction Sequence—Phase 2

Miracle Mile Construction Phasing



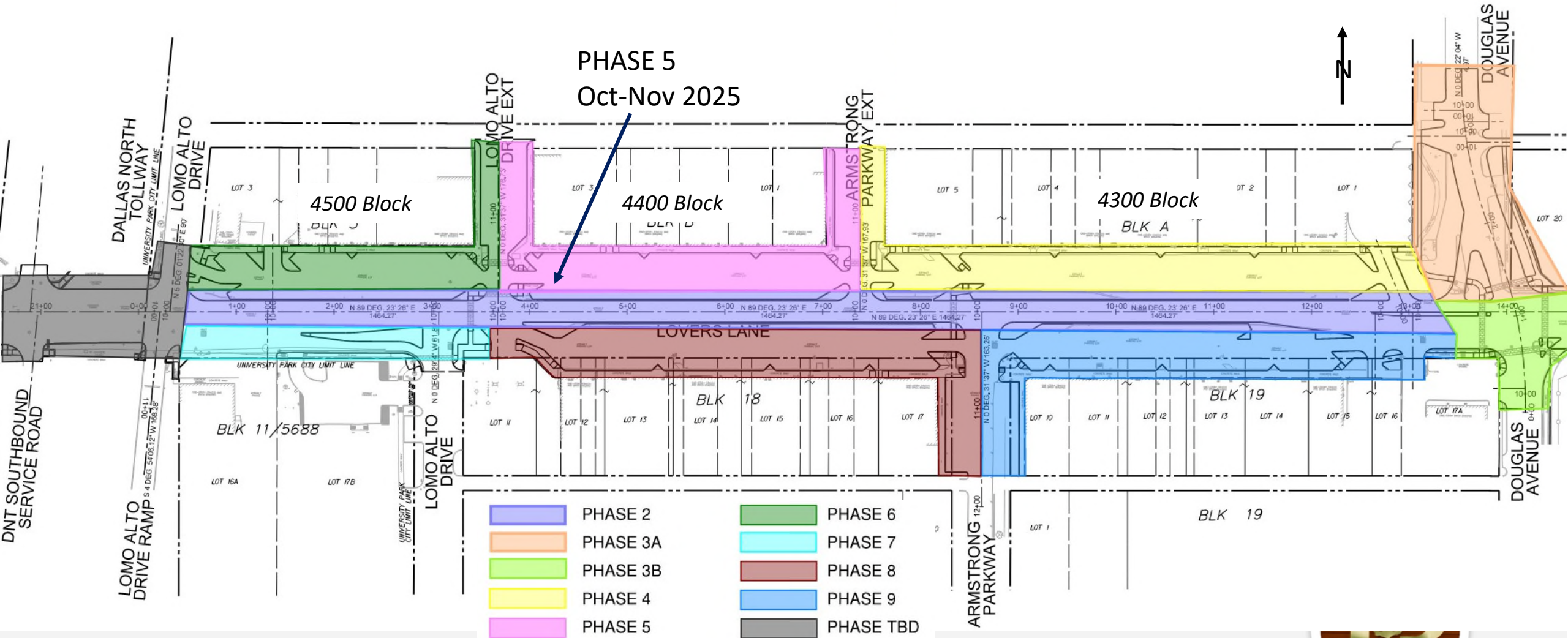
Construction Sequence—Phase 3A and 3B

Miracle Mile Construction Phasing



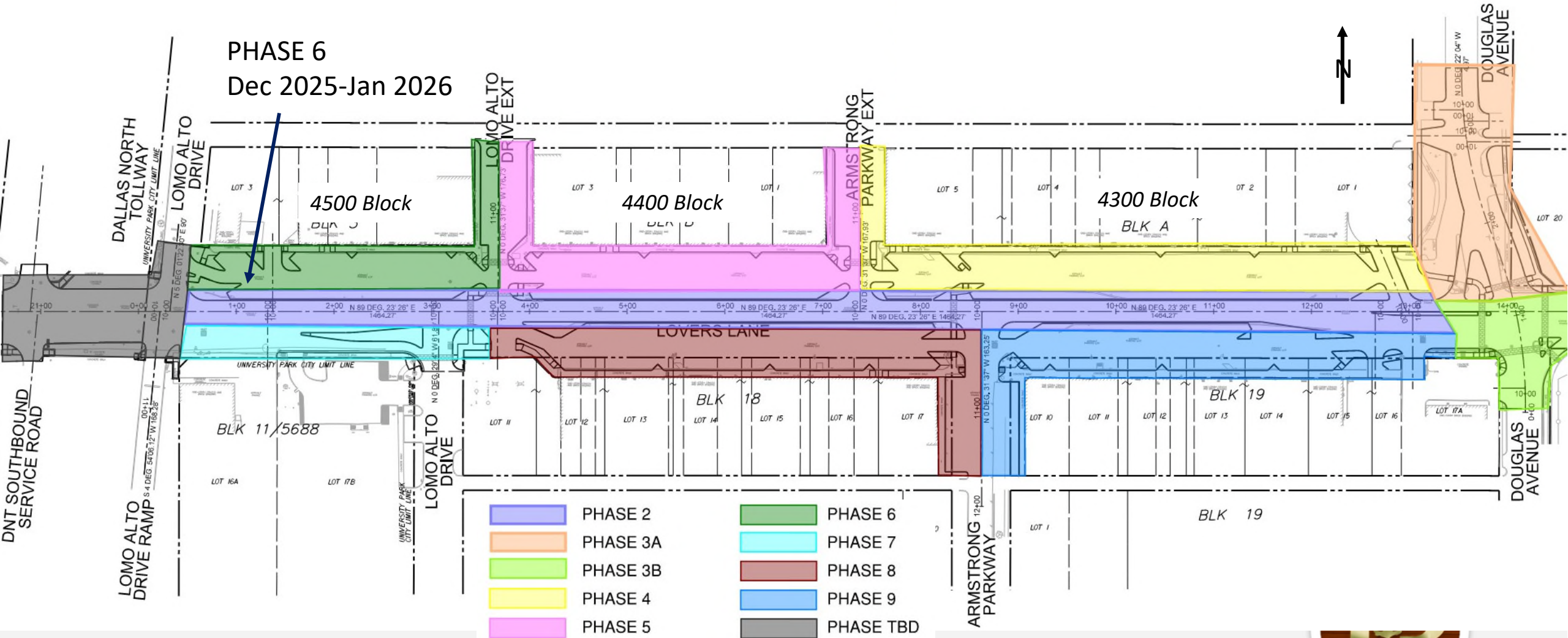
Construction Sequence—Phase 4

Miracle Mile Construction Phasing

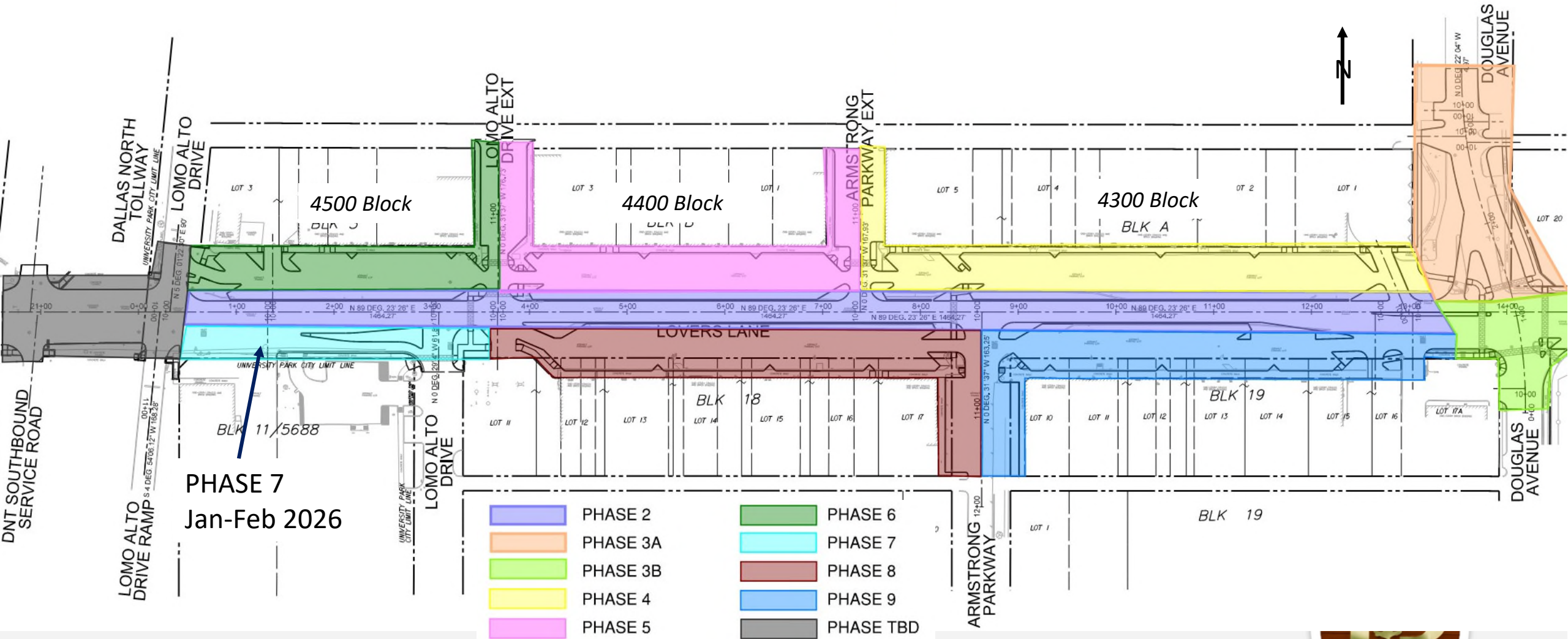


Construction Sequence—Phase 5

Construction Sequence—Phase 6

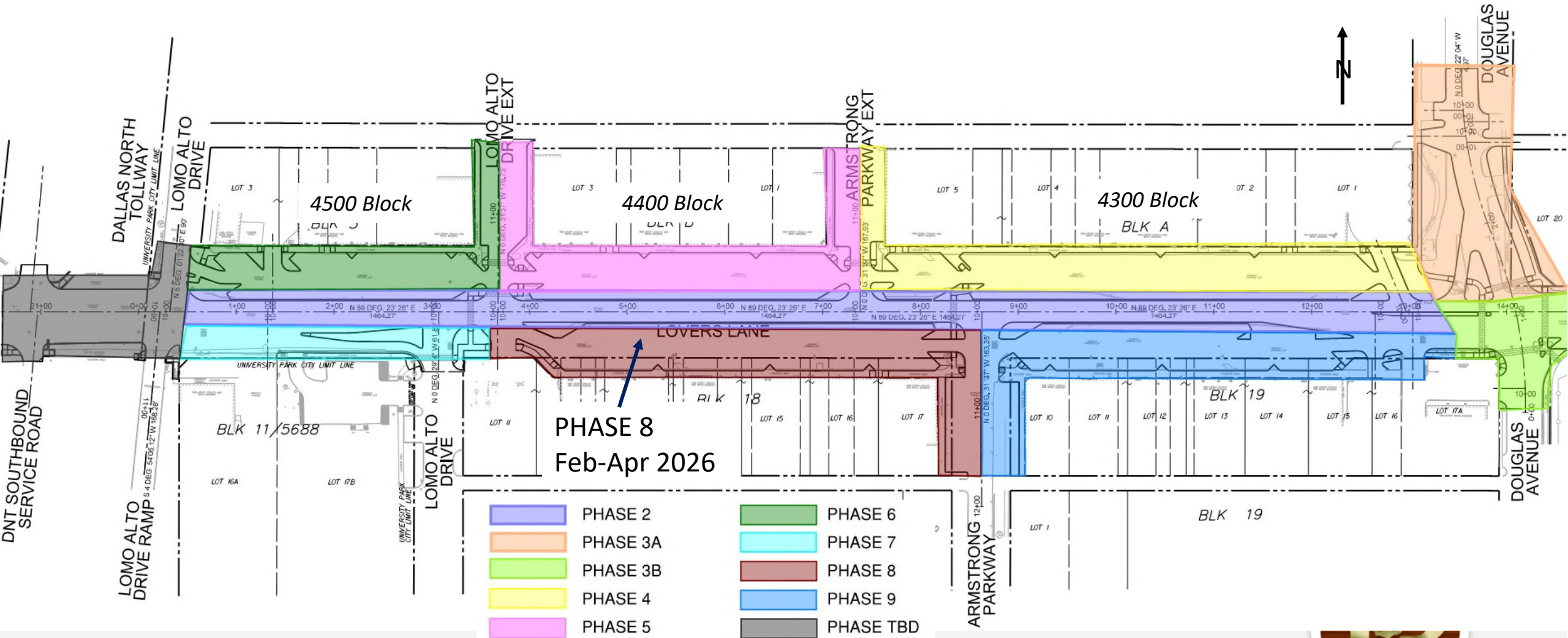


Miracle Mile Construction Phasing



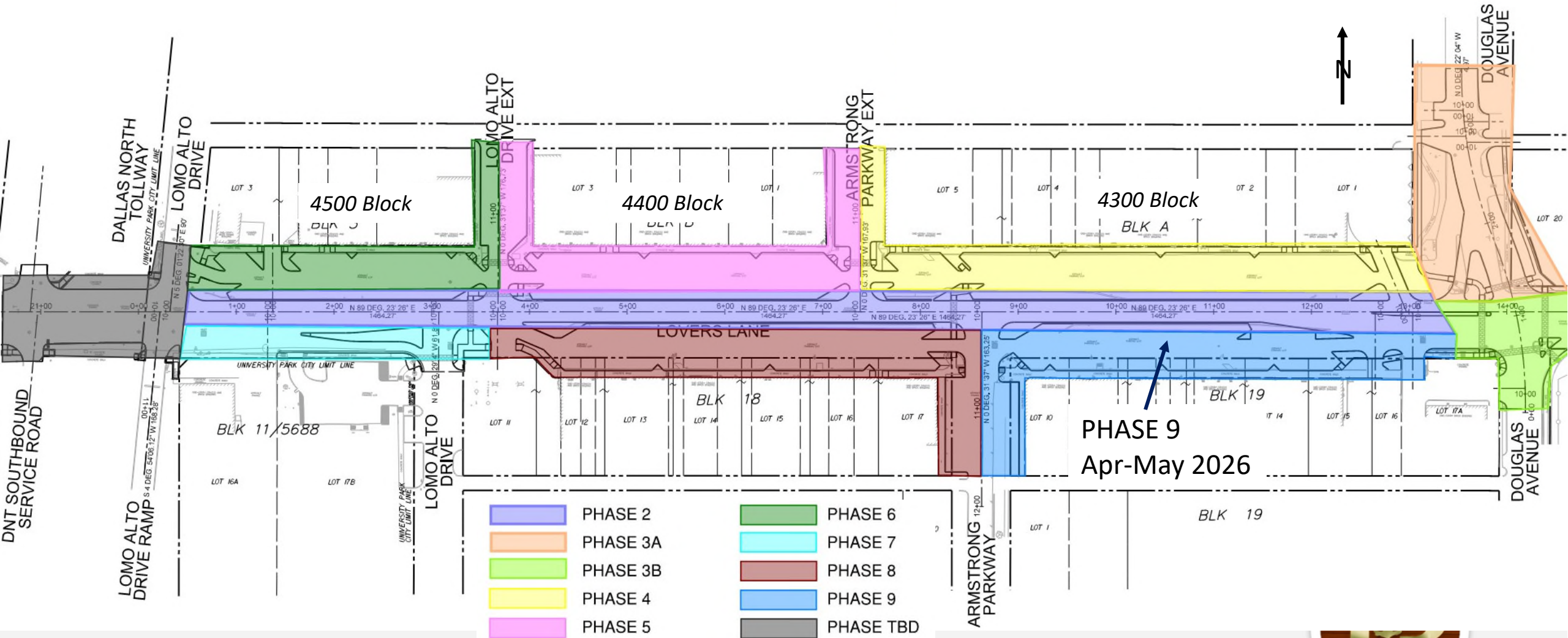
Construction Sequence—Phase 7

Miracle Mile Construction Phasing



Construction Sequence—Phase 8

Miracle Mile Construction Phasing



Construction Sequence—Phase 9

Miracle Mile Phasing

Phase 6a:

- Existing curb line removed with parking area
- Construction zone fenced with orange temporary fence
- 4'-5' of existing sidewalk remaining to be utilized during construction
- Passing areas will be installed every 150' for pedestrian access and wheelchair turnaround

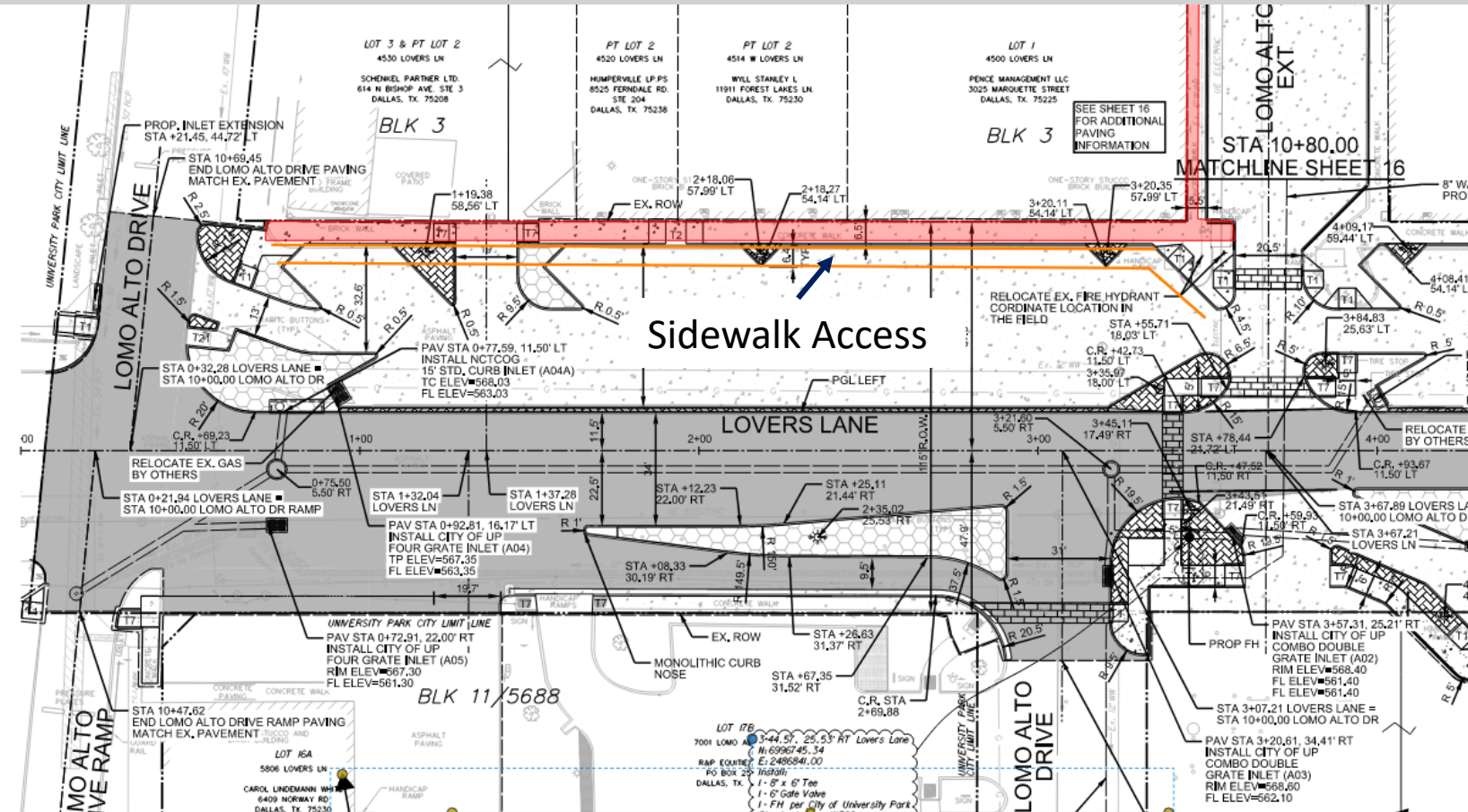


Pedestrian/Business Access

Miracle Mile Phasing

Phase 6b:

- Upon completion of first pour, sidewalk will be constructed against the buildings in increments
- Construction zone fenced with orange temporary fence
- Ramps will be built with a non-slip surface to each business for access
- Once concrete is cured, ramps will be removed.



Pedestrian/Business Access



Construction Impacts

- Construction staging and material storage will be at 4236 Lovers.
- Permitted working hours – 7 a.m. to 6 p.m., Monday – Friday, 8 a.m. to 5 p.m. on Saturdays.
- Contractor will work with businesses for off-hour concrete pours, tie-ins, late/early hours, etc., to maintain business access.
- Saturday work and after-hours work is approved for this contract, in order to expedite the project and work around business hours, but requires prior approval.
- You will be notified with a hand-delivered notification, as well as via email and social media, any time work outside of these hours is approved.



Construction Impacts

- Wayfinding signs will be in place for parking and for businesses.
- Please adhere to all construction barricades and signage. **Please do not touch/move/tamper with any signage.**
- Please obey all detour signs and be courteous to traffic flaggers.
- Please do not disturb any construction staking or flags.
- Please keep alleys clear for deliveries and sanitation pickup.
- Every effort to complete this important work as quickly and courteously as possible. Your patience and understanding is greatly appreciated.



Project Contacts

City of University Park

- Constr. Inspector – Chris Jackson – 469-938-8814
- Constr. Inspector – Mark Rushia – 214-649-8718
- Project Engineer – Gabby Proce – 214-987-5407
- Director of Engineering – Katie Barron– 214-987-5401

SYB Construction

- Project Manager – Colton Trout – 817-733-4871
- Project Superintendent – Logan Bennett



Questions?

UP-TO-DATE INFORMATION CAN BE FOUND AT:

Uptexas.org/miraclemile

